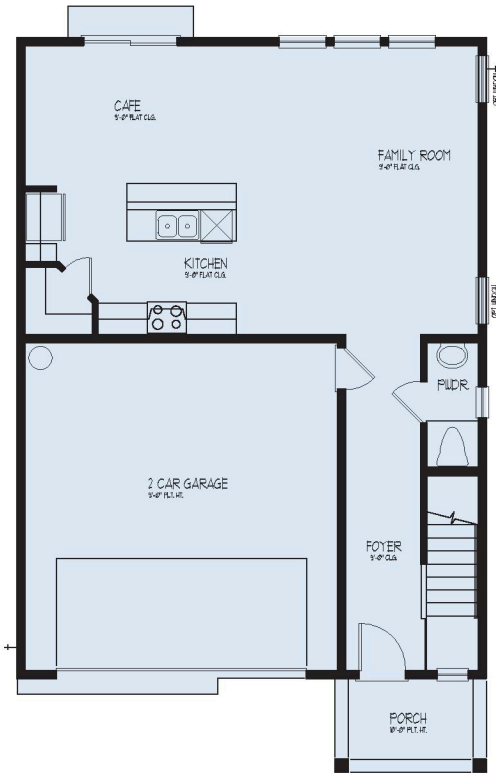


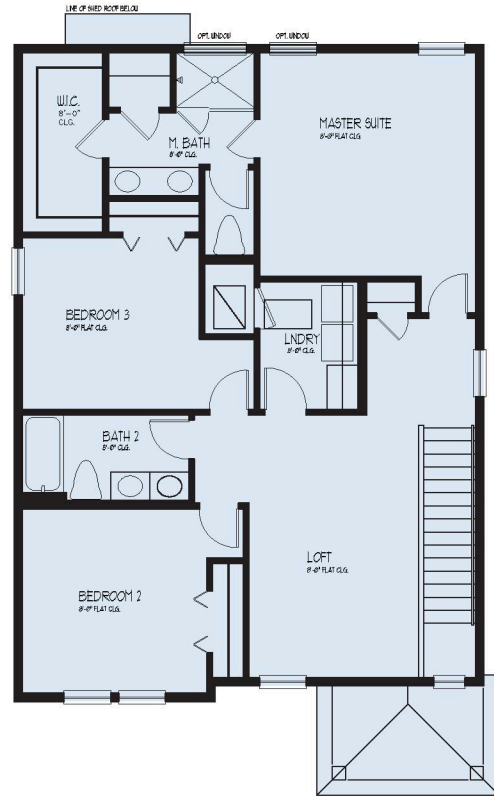
NASSAU

3-4 BEDROOM | 2.5 BATH | 2 CAR GARAGE | 1,968 SQ. FT. LIVING AREA

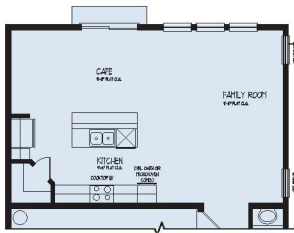
FIRST FLOOR



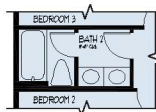
SECOND FLOOR



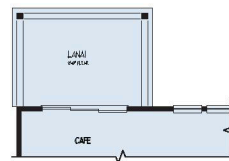
OPTIONAL STRUCTURAL ADDITIONS



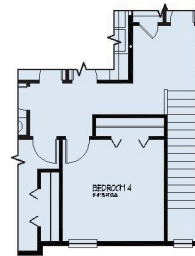
Optional Gourmet Kitchen



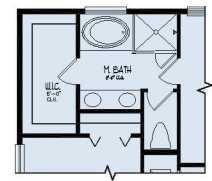
Optional Bath #2



Optional Lanai w/
9068 SGD



Optional Bedroom #4



Optional Tub & Shower



DREAM FINDERS HOMES

HOMES BUILT TO FIT YOUR LIFESTYLE

DREAMFINDERSHOMES.COM

Dream Finders Homes reserves the right to change elevations, specifications, materials and pricing without prior notice. Variations within the floor plans and elevations do exist. Square footage are approximate and will vary. ©2019. Dream Finders Homes 6/19.



CBC1257579